

Other services

Keep aging equipment from breaking down!

Preventive maintenance

Just stick on these thermal radiation silicon sheets—no power needed!

Banban sama-sukun

Reverse engineer your way to longer equipment life!

Reverse engineering

Create safe and reliable production systems!

Analysis of failure causes

Introducing analysis services for selecting new products and equipment planning!

Reliability tests

Evaluate how many more years equipment can be used safely!

Remaining life tests

Introducing a revolutionary device that prevents failures!

Mamo-rukun

Protect PCBs in extreme environments!

PCB coating

Company profile

Company name LOVEOX

CEO Wataru Ushijima

Founded December 1986

Employees 90

Tokyo Head Office 1-23-2 Azusawa, Itabashi-ku, Tokyo 174-0051 Japan

Sending address LOVEOX Logistics Center 4-14-38-1F Azusawa, Itabashi-ku, Tokyo 174-0051 Japan

LOVEOX

Search



CONTACT

✉ repair@loveox.co.jp

☎ +81-3-3960-8096

 **LOVEOX**

We support PCBs over the long term by bringing devices back to life.

HISTORY

1986

• Founded as LOVEOX in Hasunumacho, Itabashi-ku, Tokyo, Japan

• Launched its PCB mounting service

2007

• Launched its preventive maintenance service

• Launched its PCB repair service

2010

• Established LOVEOX Shanghai (日希机电(上海)有限公司)

2012

• Opened its first branch: West Japan Branch

2013

• Opened its Nagoya Branch

2014

• Opened its Kyushu Branch

2015

• Opened its Tokyo Repair Factory in Azusawa, Itabashi-ku, Tokyo, Japan

• Launched its analysis of failure causes service

• Launched its reverse engineering service

2016

• Co-developed "Banbansama-sukun" thermal radiation sheets with Shin-Etsu Chemical Co., Ltd.

• Released "Banbansama-sukun"

2017

• Released "Mamo-rukun"

• Launched its reliability test service

• Opened its Tokyo LABO

• Relocated its Kyushu Branch

2018

• Opened its Hiroshima Repair Factory in Fukuyama, Hiroshima, Japan

2019

• Opened its Nagoya Repair Factory

• Relocated its Nagoya Branch

2020

• Opened its Kansai Branch

2021

• Relocated its Kansai Branch

2022

• Relocated its Kansai Branch

2023

• Relocated its Kansai Branch

2024

• to be continued in the future

Over 100,000 Repairs


Over 5,000 Clients

Over 500,000 Repairs

Over 20,000 Clients

Over 300,000 Repairs

Over 10,000 Clients



No charge for estimates or if no repairs can be done

We have a

Fastest service in the industry

99.9%

PCB repair rate!

over 500,000 repairs

over 20,000 clients

Averaging just 7 days

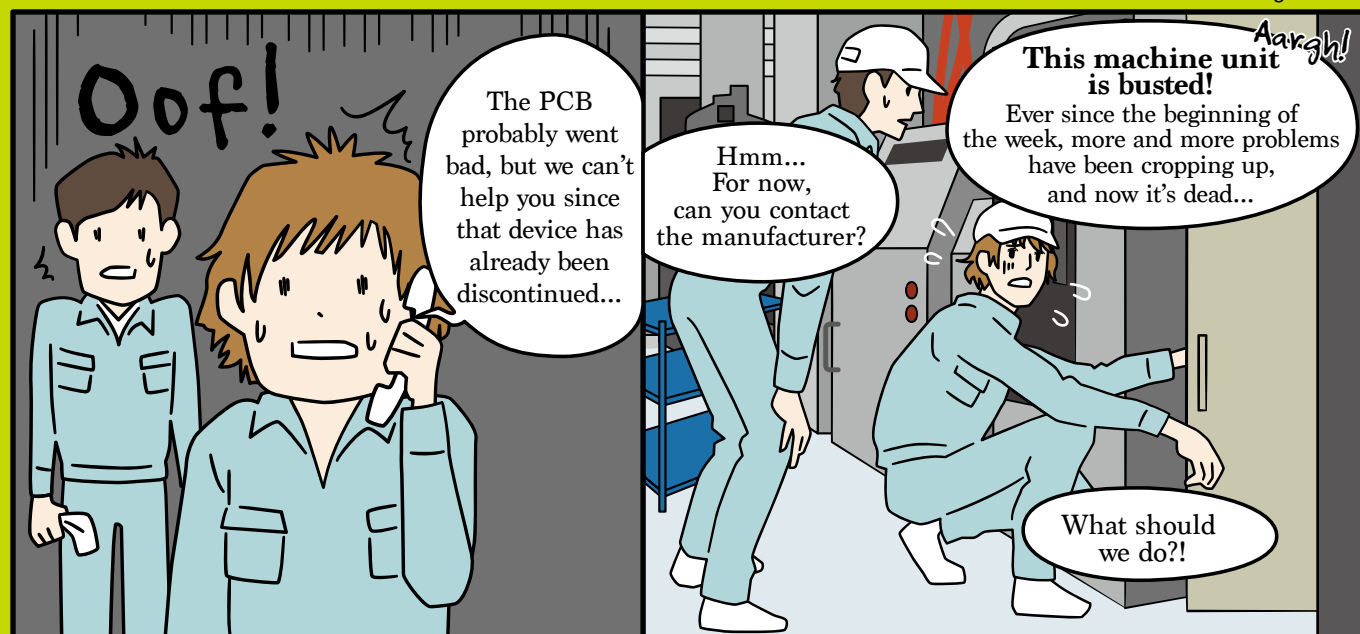
THE REPAIR





LOVEOX Explained in a MANGA

*Read from right to left.



LOVEOX is a group of PCB repair pros!



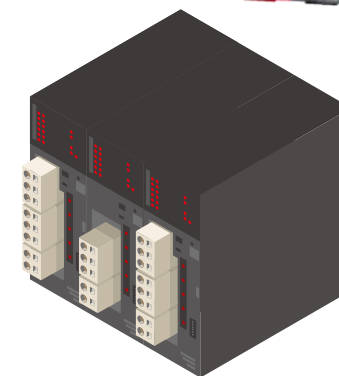
**No longer supported? No circuit diagrams either? No problem!
Our test environment is ready for anything!**

Dr. Fukuchan



**No longer supported? No circuit diagrams either? No problem!
Our comprehensive test environment
has got you covered!**

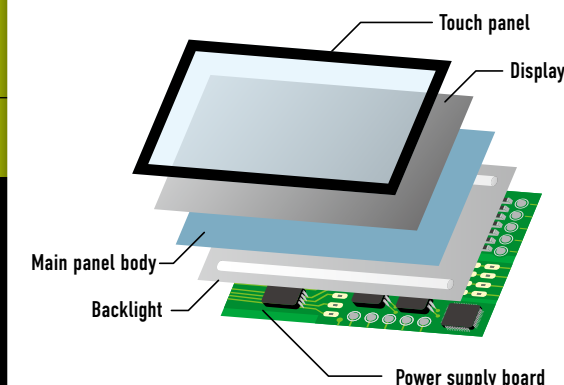
Programmable logic controllers



Models compatible with our test benches

Mitsubishi Electric	A Series, A1S Series, Remote, and Q Series
Fuji Electric	FTK Series, FTU Series, and CIO-200
Toshiba	T2 Series, T3 Series, and V Series

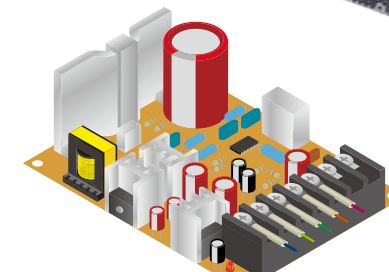
Touch panels



Repairable parts

- Power supply boards
- Displays
- Touch panels
- Main panel bodies
- Backlights

Power supplies



Output voltage measurement display



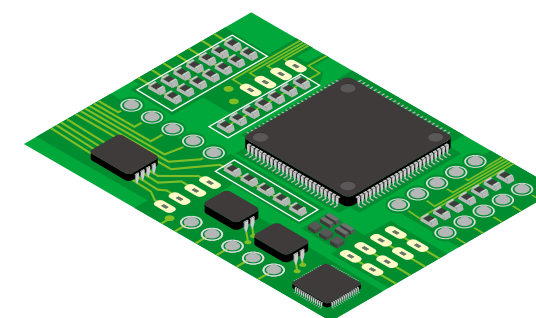
Ripple voltage measurement display



Testing methods

- Output voltage measurements
- Output current measurements
- Aging tests
- Ripple voltage measurements

Printed circuit boards



Examples of PCBs

- Control boards
- Power supply boards
- CPU cards
- Display boards
- OPC boards
- Relay boards
- I/O boards
- LED PCBs and more!

Top-quality repairs for your PCB troubles!

Quickest repairs



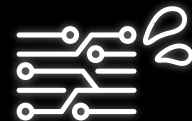
Has your production line come to a stop?
On average, we can finish repairs
in 7 days

Durability boosts



We reduce the frequency of failures
by replacing old parts
with high-performance parts

Semiconductor shortages



By keeping older PCBs in shape,
we overcome new equipment shortages

On-site services



We can provide a free on-site
diagnosis ASAP and
troubleshoot while we're there

Global repairs



Repairs are also handled at
Japanese-owned factories
located overseas

No longer supported products



We even repair products
that aren't supported
by their manufacturers anymore

Burnt PCB repairs



We repair burnt PCBs
even when manufacturers won't

Imported product repairs



Repairs that would take ages overseas
are handled in Japan for
quicker delivery

Discontinued parts



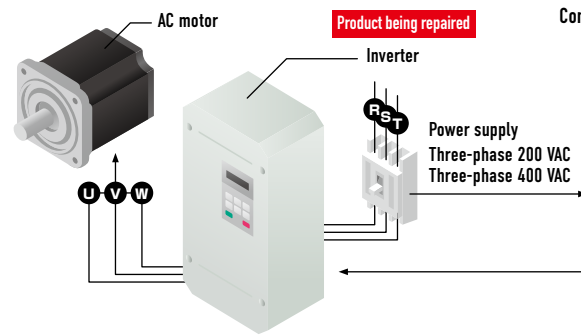
We repair PCBs
even when parts are difficult
to procure

Inverters



Repairs handled: 0.1 kW to 560 kW

Connection work

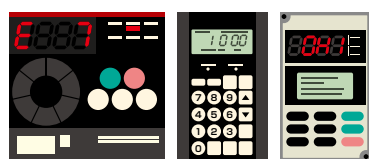


Test bench

Confirm control, settings, and operation



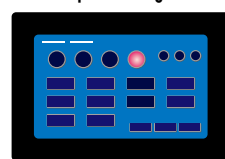
Confirm rotation/speed changes



Error display

Pass/fail judgment

Example: Fixed speed rotation and speed change



Control

I/O settings

Settings

Frequency settings (rotations)

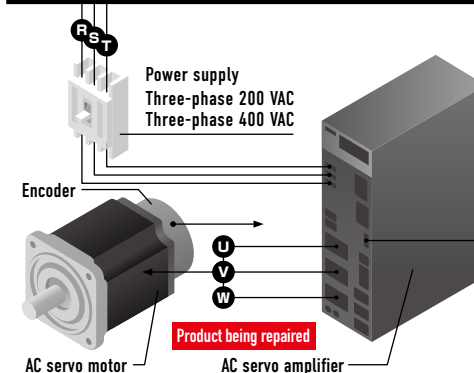
Mitsubishi Electric	FR-A500, FR-F700, and FR-A800
Yaskawa Electric	VS-616G5 (CIMR-G5A), Varispeed G7 (CIMR-G7A) and A1000 (CIMR-AA)
Fuji Electric	FRENIC5000V2 (FSDxxA), FRENIC5000VG7S (FRNxxVG7S) and FRENIC-Ace (FRNxxE2S)

AC servo amplifiers



Repairs handled: 0.01 kW to 22 kW

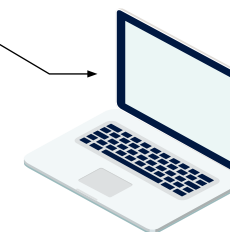
Connection work



PC + software tools

Install manufacturer-provided software,
then confirm control, settings, and operation

SETUP81 / SETUP161 /
MR Configurator /
MR Configurator 2 /
SigmaWin+



Example: JOG operation and program operation



Mitsubishi Electric	MR-SA, MR-H, MR-JN, MR-J2, MR-J2S, MR-J3, and MR-J4
Yaskawa Electric	CACR, SGDB, SGDM/H, SGDS, SGDV and SGD7

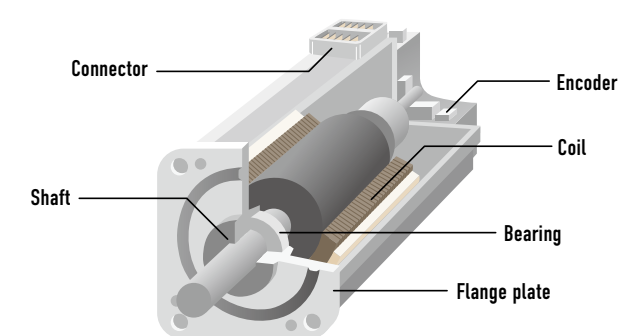
Mitsubishi Electric motors



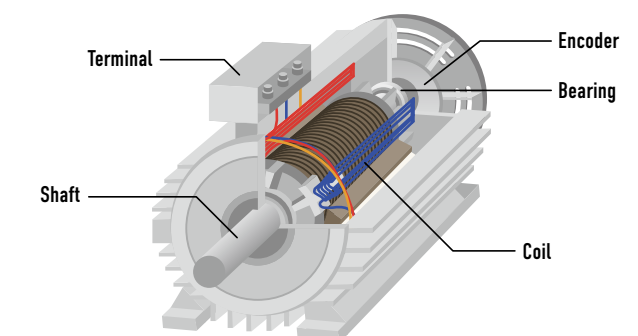
Three-phase motors / spindle motors / AC servo motors

Repairs handled: 0.05 kW to 55 kW

AC servo motor repairable parts



Three-phase motor repairable parts



Three-phase motor	SF-JR, SF-V5RU-xK, SF-V5RU-HxK, SF-VRxK, and SF-VRHxK
AC servo motor	HAxxNC-S/SS, HC-KFS, HC-MFS, HC-SFS, HC-LFS, HC-RFS, HC-UFS, HA-LFS, HF-MP, HF-KP, HF-SP, HA-LP, HC-RP, HC-UP, HC-LP, HF-JP, HG-MR, HG-KR, HG-SR, HG-JR, HG-RR, and HG-UR
Spindle motor	*Contact for details